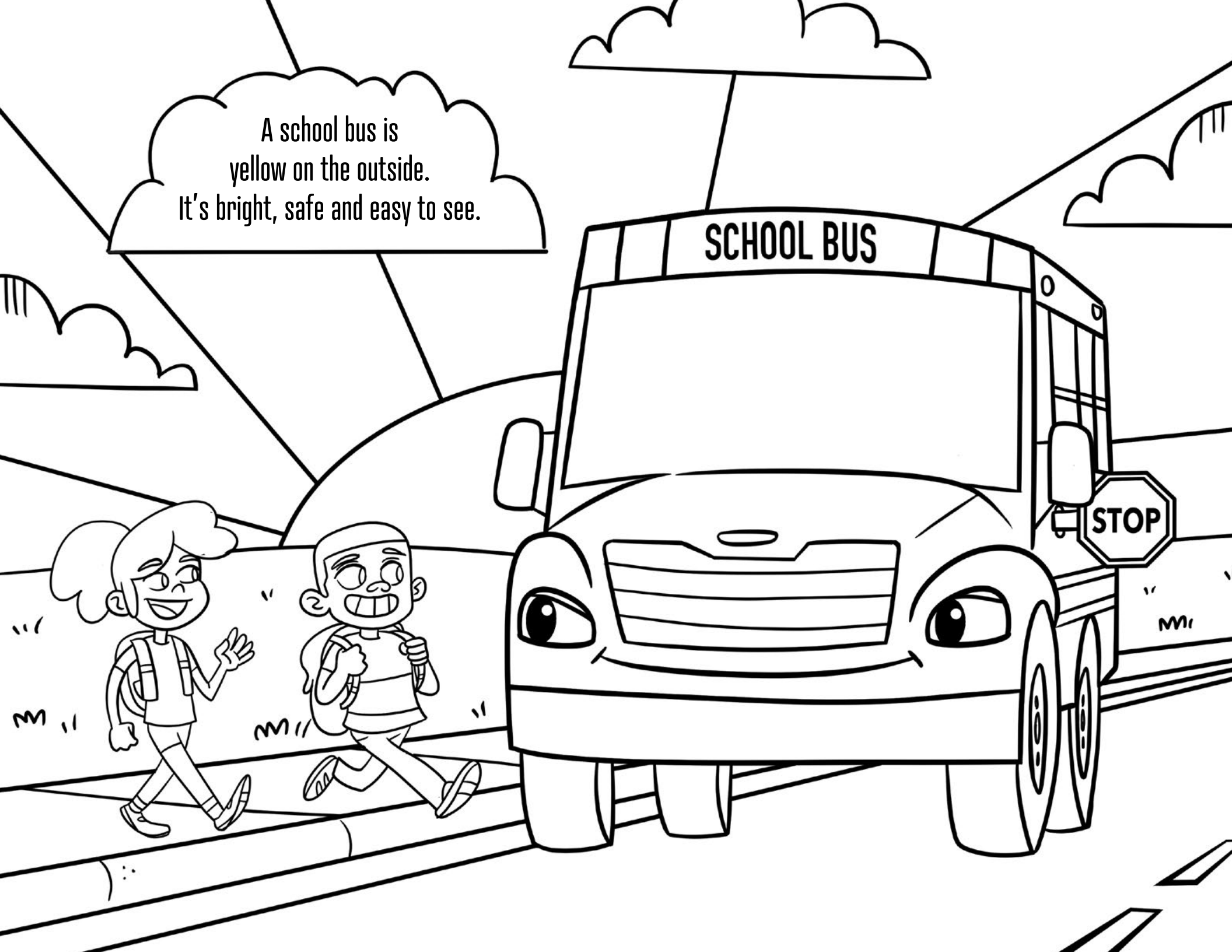


WHAT COLOR IS AN
ELECTRIC
SCHOOL BUS?

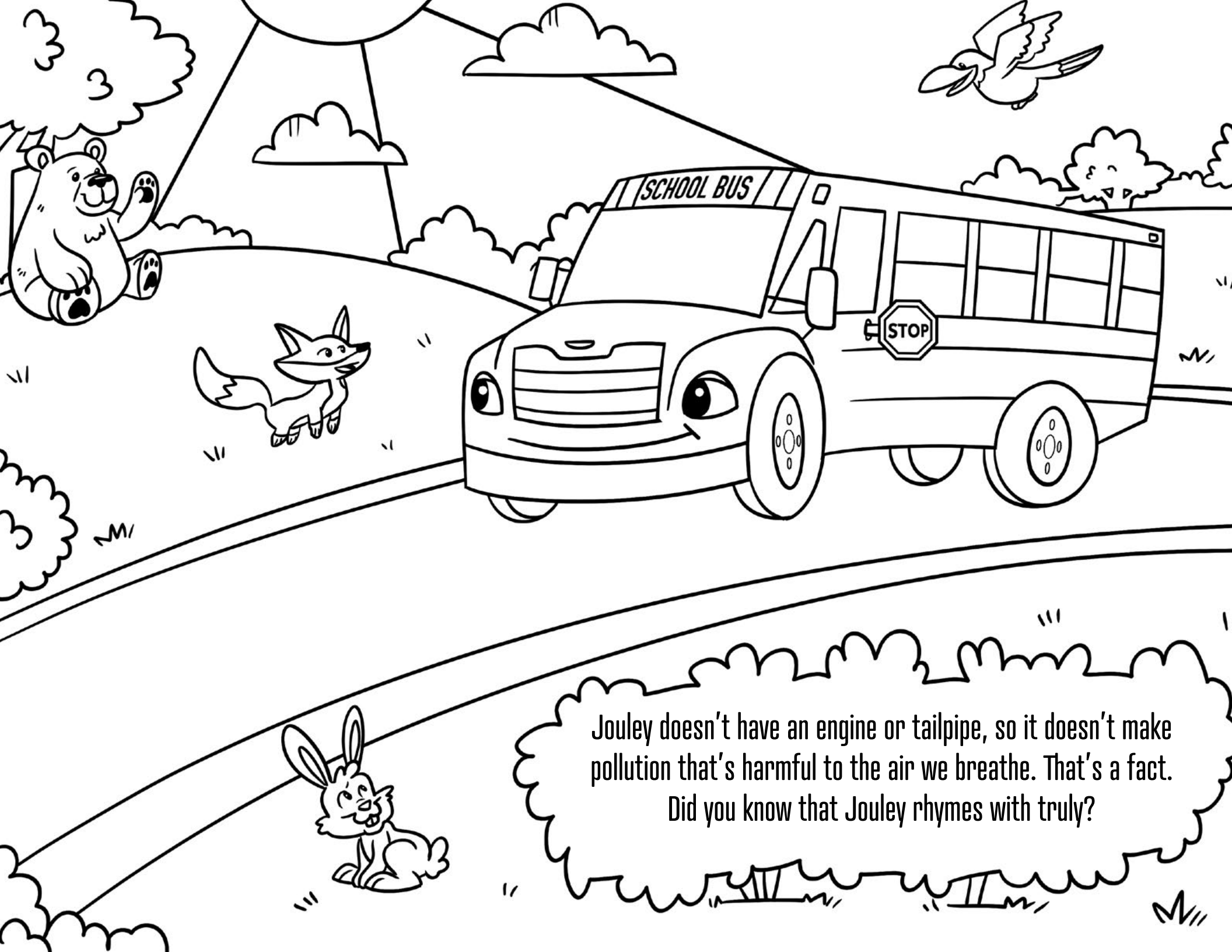
JOLEY'S COLORING BOOK

A school bus is
yellow on the outside.
It's bright, safe and easy to see.



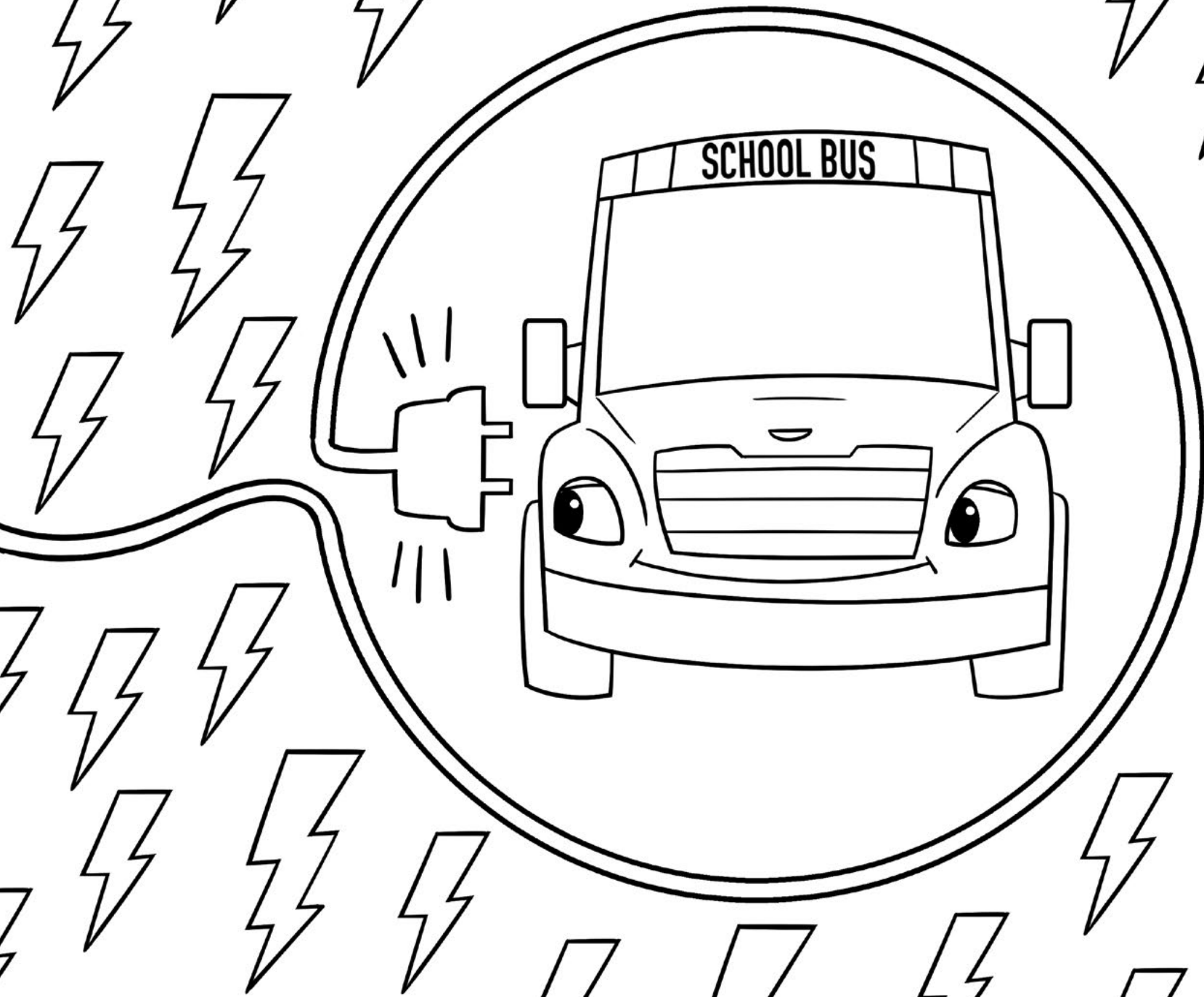


But some school buses are also green, like Jouley the electric school bus. Jouley is green because it's better for the environment.



Jouley doesn't have an engine or tailpipe, so it doesn't make pollution that's harmful to the air we breathe. That's a fact. Did you know that Jouley rhymes with truly?

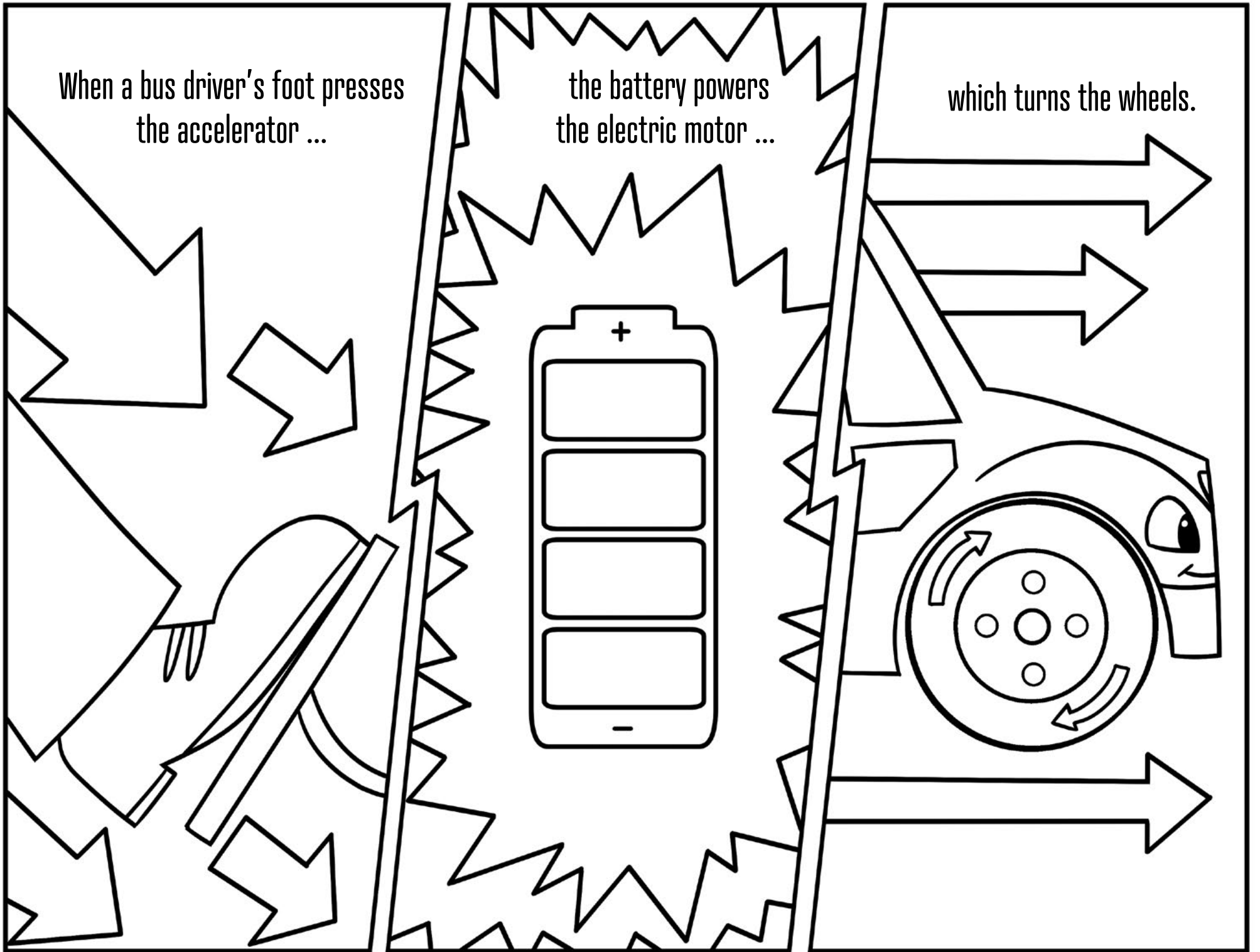
Maybe Jouley can be the color blue, too. Just like the glow of the electricity that makes it go.



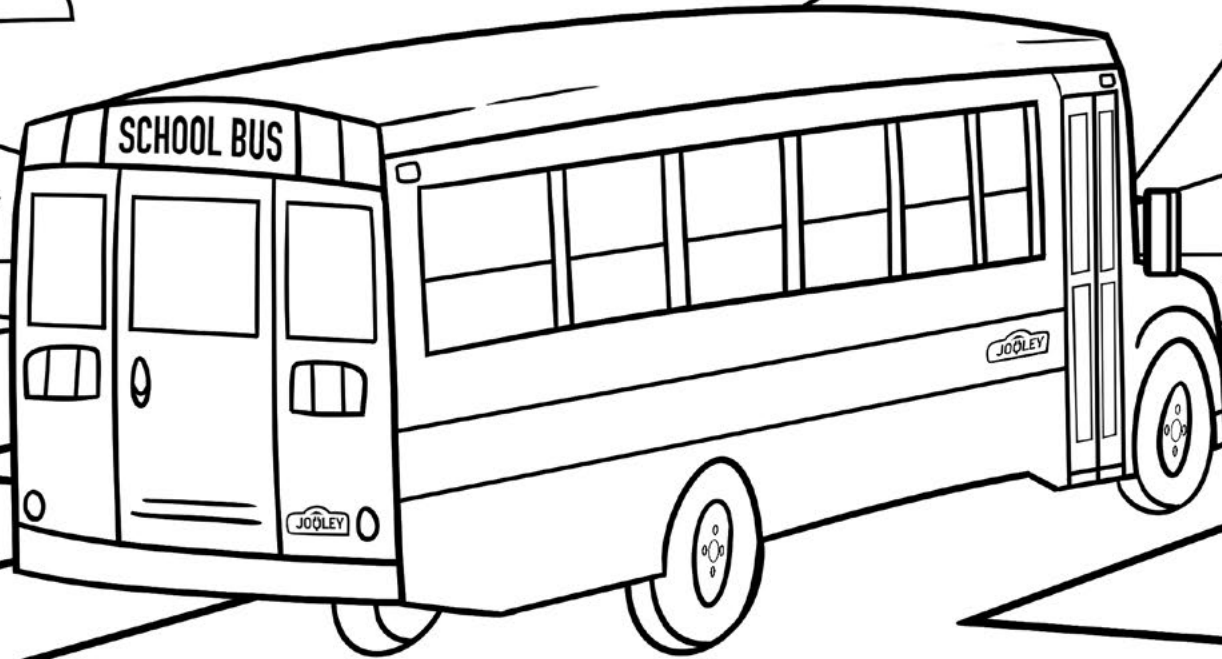
When a bus driver's foot presses
the accelerator ...

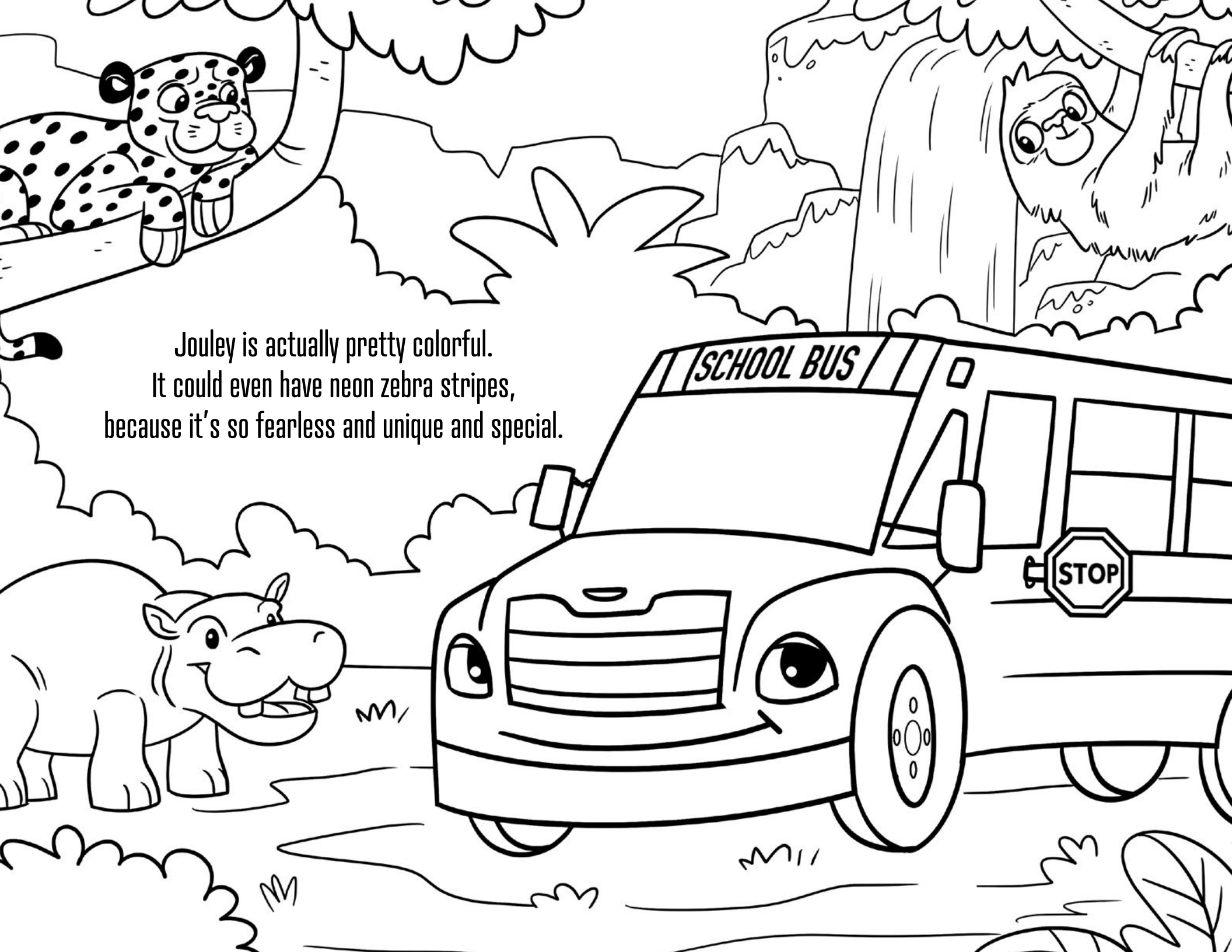
the battery powers
the electric motor ...

which turns the wheels.

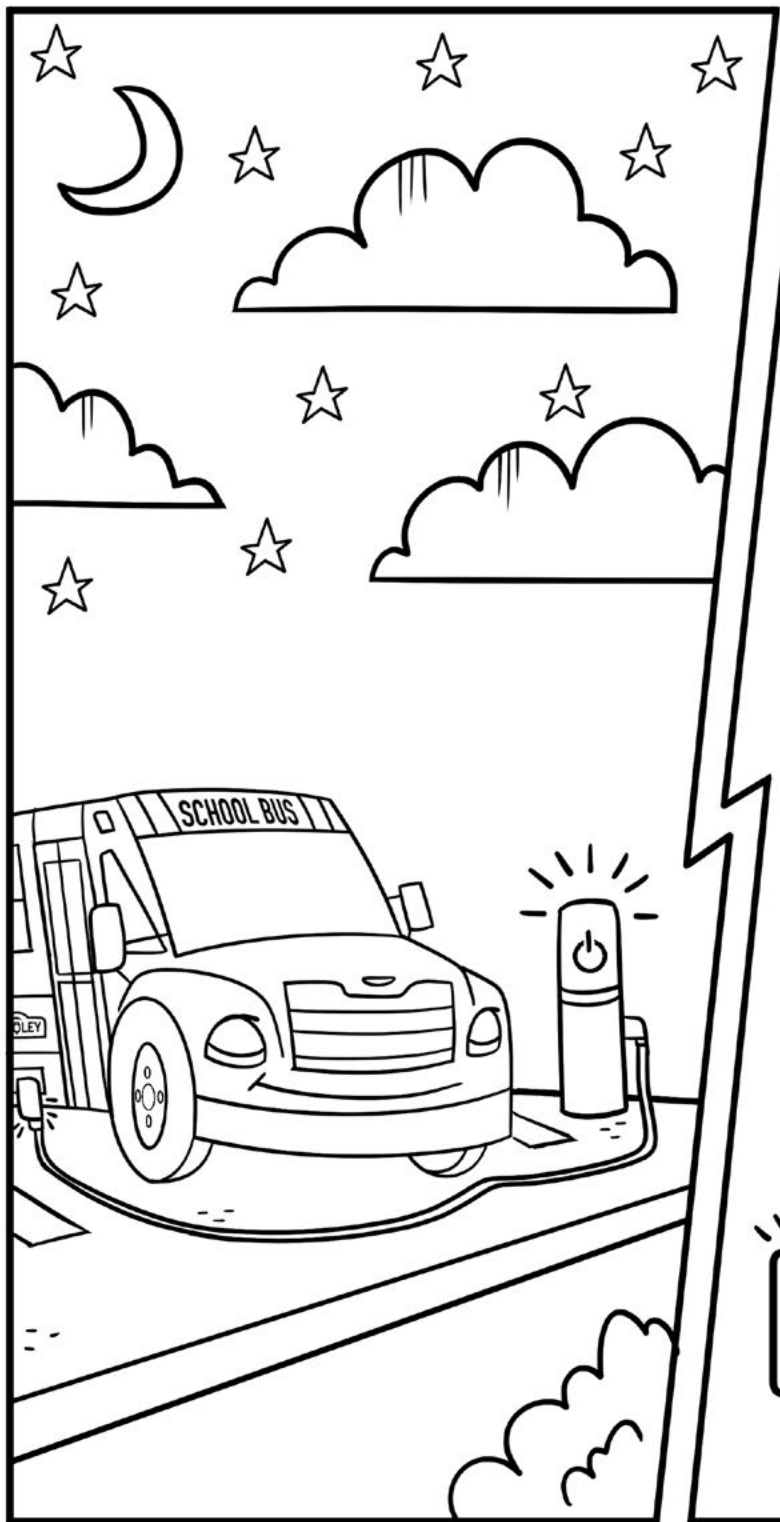


And when the wheels turn, the bus drives ahead.
Does that look pink, purple, orange or red?

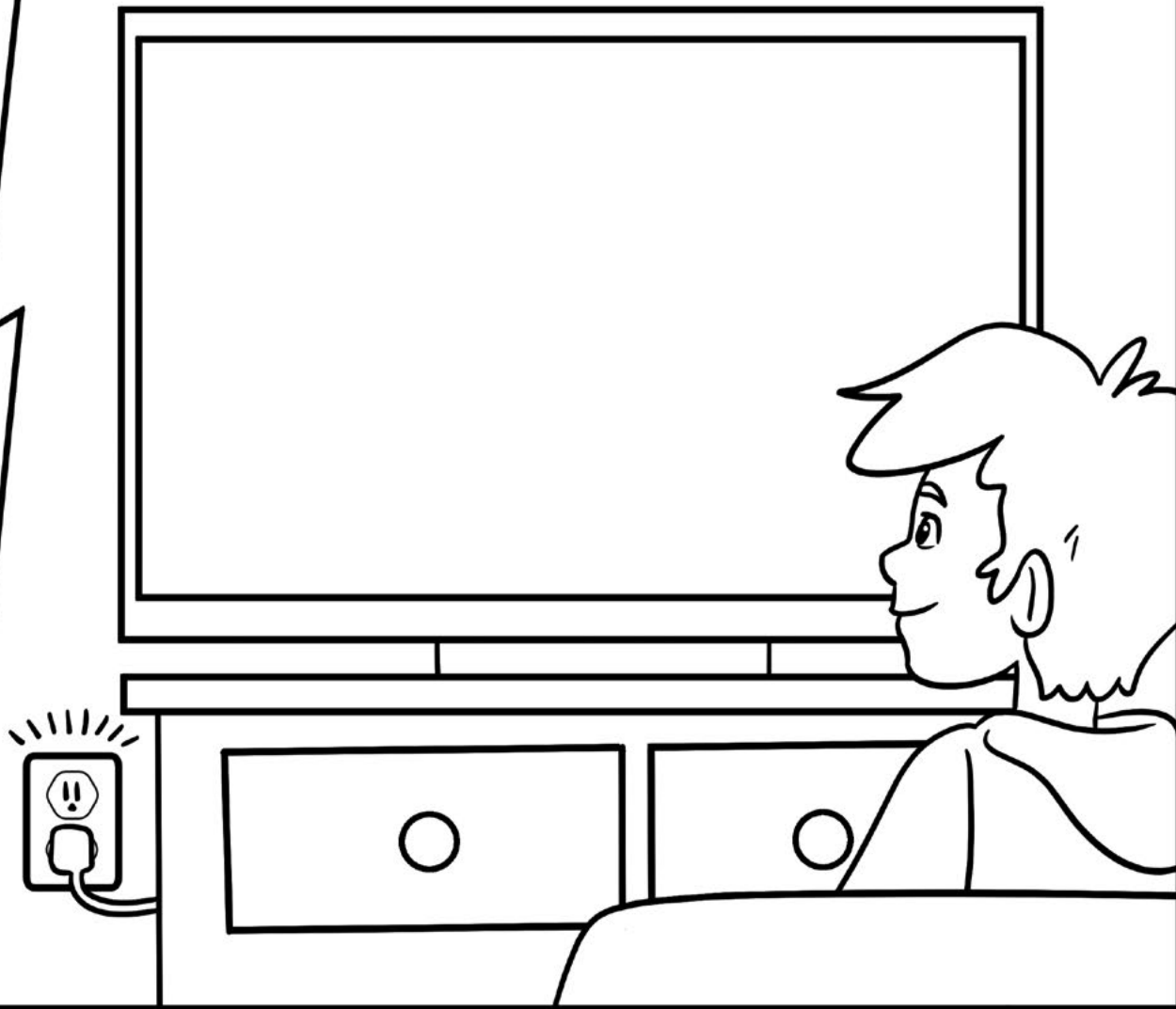




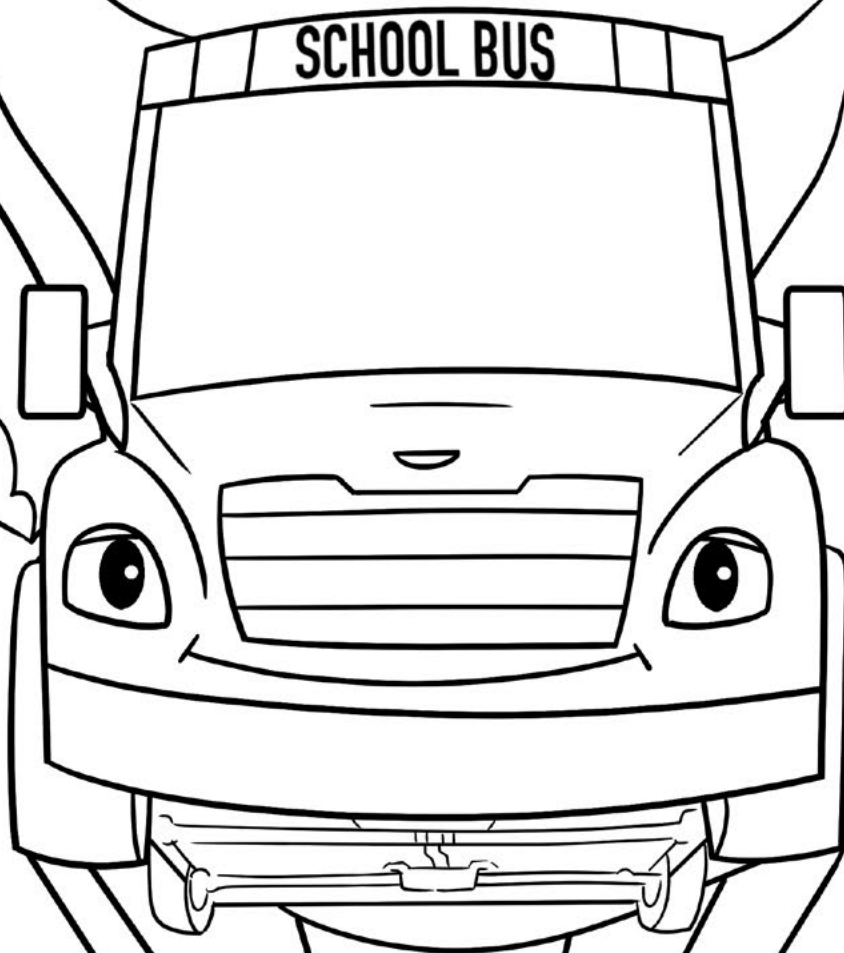
Jouley is actually pretty colorful.
It could even have neon zebra stripes,
because it's so fearless and unique and special.



Maybe Jouley is all the colors of your favorite cartoon character, because when it's parked, it gives electricity back to the electric grid that powers your TV.



So, school buses aren't just yellow. Special ones, like Jouley, can be any color in the world, because they are made to protect everything in our world ...



... from green trees and snowy mountains
to furry chipmunks and friendly bees.

